

SYSTEM DECOQUARTZ Cycling Track System



Consists of colored quartz aggregates broadcasting (in granulometry of 0.7mm – 1.2mm) and two-component polyurethane resins for outdoor applications.

Recommended for cycling tracks, for antislip outdoor floorings, ramps, stairs, in surrounding areas of swimming pools, in city squares, etc.

Steps :

1. **PU PRIMER 870.** Polyurethane primer.
2. **COLOR QUARTZ AGGREGATES** – In granulometry of 0.7mm-1.2mm.
3. **PU COATING** – Polyurethane, UV-resistant, two-component coating.
4. **COLOR QUARTZ AGGREGATES** – In granulometry of 0.7mm-1.2mm.
5. **POLFLOOR PU 807** – Polyurethane, two-component UV-resistant sealing coat. Highly resistant to adverse weather conditions (snow, frost, heat waves, etc).

Preparation – Application

Applied only on dry asphalt and concrete surfaces (over 30 days old from date of placement) without rising humidity issues and free of materials that might prevent bonding e.g. dust, loose particles, grease etc. The success in the application depends on the right preparation of the underlay and use of the material.

- **Good, dry** cleaning of the surface from dust and residues with vacuum cleaner and squeegees.

- On fine smooth asphalt (after the application of special pore filler ELASTOSPORT 853) or on smooth waterproof power troweled concrete, **application of the special UV, aliphatic, polyurethane resin PU PRIMER** in 2 layers with total consumption 0,3-0,4 kg per square meter.
- After the last layer of the PU resin is applied, broadcast the QUARTZ sand, in granulometry 0.7-1.2mm, by allowing it to fall as vertically as possible from a chest-high level. Broadcast uniformly onto the wet substrate until the substrate is no longer visible and the quartz appears and remains dry in appearance. Allow a minimum of 6 hours at 25 °C drying time. Sweep or vacuum excess quartz aggregate from the surface.
- Then, with an airless spray, we apply one more layer of the PU resin following by broadcasting the QUARTZ sand while the final layers of PU varnish is still wet, in granulometry 0.7-1.2mm. Next day sweep or vacuum excess quartz aggregate from the surface.
- Then we apply one layer of **POLFLOOR PU 807**, polyurethane sealing coating.
- The final result is a very strong UV resistant flooring that has high durability

Important Remarks

- ✓ In case of extremely rough and sharp cement or asphalt surfaces it is recommended grinding of the surface with a mosaic machine, before the application of ELASTOSPORT 853.
- ✓ During summer or during temperatures over 40 degrees, ideal time for the application of **DECOQUARTZ** is between 22:00 and 09:00 and the minimum bearing temperature during application and drying should be over 10°C.
- ✓ The freshly coated surface should be protected from high temperatures, wind, rain and frost for at least the first 24 hours.

Substrate

Asphalt is the safer subfloor for sport floorings for sure and must be always preferred than concrete surfaces.

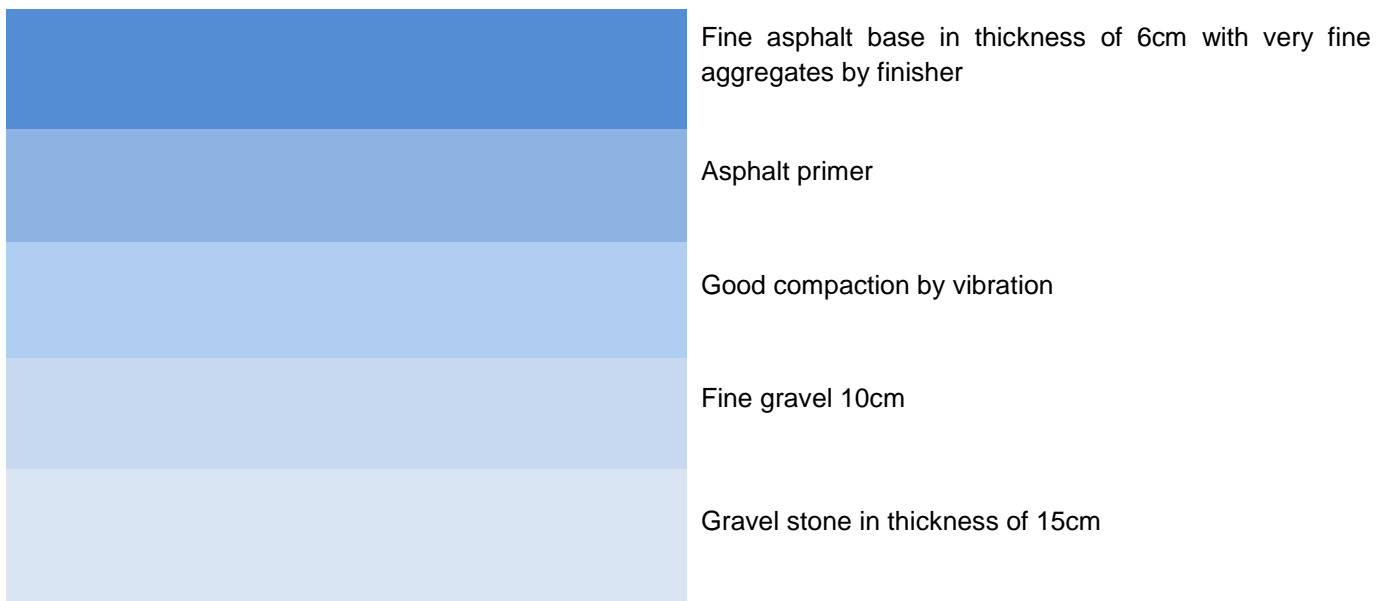
A. Asphalt Substrate

The asphalt must have a slope of 0.7-1% and must dry for at least 30 days so that all solvents from the asphalt can evaporate.

The asphalt sub-floor should be applied on well compacted 150mm road base sub-floor and asphalt should be laid in one layer (and not 2) in 6 to 8cm with fine and coarse aggregates (up to 15mm granulometry) like the kind of asphalt used in road construction.

So, new road-grade asphalt will have to be laid (minimum 60mm) in one layer containing coarse aggregates and then mature for 30 days at least, before any application takes place on top of the asphalt to avoid bubbles on the final layer of the sport or rubber floorings.

Asphalt Infrastructure



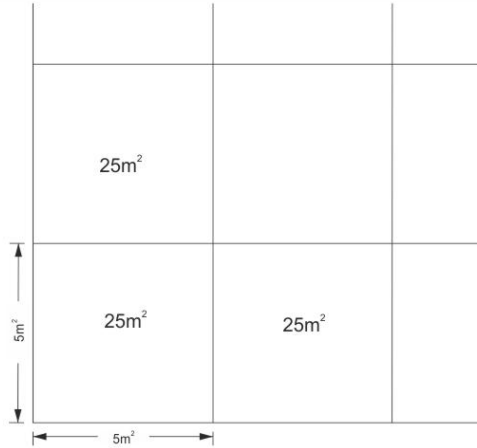
B. CONCRETE SURFACES

Concrete surface must be power-trowelled without cracks and must be smooth with a slope of 0.7-1% and humidity under 4% in 10cm depth of concrete.

Concrete must also be **dry at least for 40 days** and then the application takes place if there is no rising humidity for the sub-floor. Before the application takes place, there must be proper grinding of the surface by a grinding machine to open the pores accordingly and also a measurement by special instrument to measure humidity on the surface and in 10cm under the surface.

Generally concrete is a risky sub-floor and there may be problems with rising humidity, especially in areas where the sea level is really high and when the sea is close or in areas near greenery.

Always make expansion joints in large areas of concrete, in order to avoid uncontrollable cracks and failures.
 Joints should be every 25 square meters creating a grid of 5x5 meters or close to that.



<u>SUBSTRATE REQUIREMENTS</u>	Concrete quality	at least C20/25
	Age:	at least 40 days
	Moisture content:	below 4%

Tools:



Colors : Following colorchart.

KDF - Kataskeves Dapedon LTD
 e : exports@kdf.gr w : www.kdf.gr

Showroom Office
 1 Papanikolaou Ave, Pefka
 57010, Thessaloniki, Greece
 t / f : 0030 2310 829598
Accounting Office
 19 Mitropoleos Str
 54624, Thessaloniki, Greece

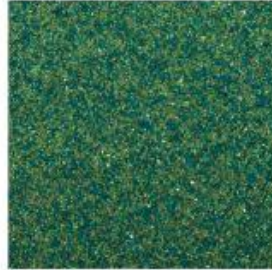


KDF

Sports Flooring Systems & Building Materials
50 YEARS OF EXPERIENCE



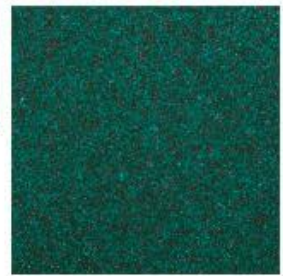
Mojito



Lime



Appletini



Mintini



White Russian



Martini



Pina Colada



Salt & Pepper



Black Russian

The colors may vary slightly from the original due to digital representation.

KDF - Kataskeves Dapedon LTD
e : exports@kdf.gr w : www.kdf.gr

Showroom Office
1 Papanikolaou Ave, Pefka
57010, Thessaloniki, Greece
t / f : 0030 2310 829598

Accounting Office
19 Mitropoleos Str
54624, Thessaloniki, Greece



KDF

Sports Flooring Systems & Building Materials
50 YEARS OF EXPERIENCE



Strawberry



Daiquiri



Crimson



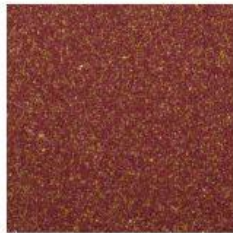
Sangria



Bloody Mary



Whiskey



Americano



Cognac



Cuba Libre



Chocolate



Coffee

The colors may vary slightly from the original due to digital representation.

KDF - Kataskeves Dapedon LTD
e : exports@kdf.gr w : www.kdf.gr

Showroom Office
1 Papanikolaou Ave, Pefka
57010, Thessaloniki, Greece
t / f : 0030 2310 829598

Accounting Office
19 Mitropoleos Str
54624, Thessaloniki, Greece

