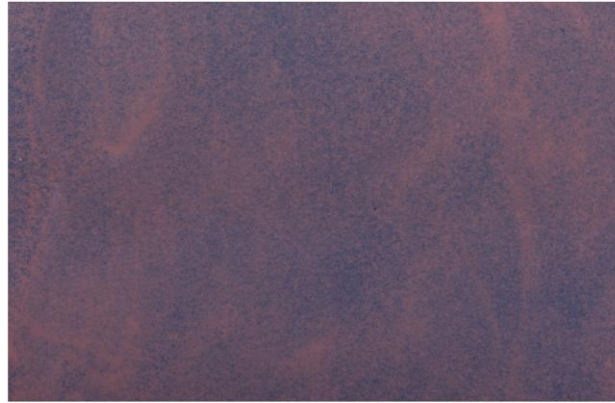


## POLEPOX DECOR

### Indoor Decorative Flooring



Epoxy-based, self-leveling, three-component decorative flooring with special transparent or semi-transparent pigments and colored quartz aggregates with fine granulometry. It creates a uniform flooring with many possibilities in designs.

Recommended for clubs, bars, lobbies, malls, any kind of shops and super markets, hotels and also for houses and villas for indoor use.

#### Preparation – Application

Applied only on dry, smooth concrete or other porous, stable surfaces like marble without arising humidity issues and free of materials that might prevent bonding e.g. dust, loose particles, grease etc. The success in the application depends on the right preparation of the underlay and use of the material.

- Treatment of the surface with a mosaic machine.
- **Good, dry** cleaning of the surface from dust and residues with vacuum cleaner and use of squeegees.
- Priming of the surface with **POLEPOX-PR 824**. Consumption: 200-600 gr/m<sup>2</sup> in two or more layers on industrial, troweled floorings. 300-600gr/m<sup>2</sup> depending on the type and the absorbency of the underlay.
- After hardening of the primer (2-12 hours depending on the ambient temperature) and mixing the two components of **POLART DESIGN** pour the mixed epoxy on the floor using a flat metal trowel for the application of the mixture. Move the trowel in crescents (half-circles) to create the unique **EPOXY DESIGN(decorative system)**, patterns. Use the

trowel gently and smoothly to apply the **POLART DESIGN** mix. Because of the unique appearance of **EPOXY DESIGN(decorative system)**, the film thickness and finishing techniques will have an impact on the final appearance of the floor.

- Finally, after **POLART DESIGN** has dried we can apply clear topcoat, **PLASTICOAT 850**.